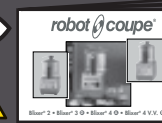


# R 2 / 3 / 4 / 4 V.V. / 5 / 5V.V. / 6 / 6V.V.

Consignes de sécurité et d' utilisation / Safety and Operating Instructions  
 Veiligheidsvoorschriften en gebruiksaanwijzing / Sicherheits- und Bedienungshinweise

À fixer au mur.  
 Hang on the wall.  
 Aan de wand te bevestigen.  
 An der Wand zu befestigen.

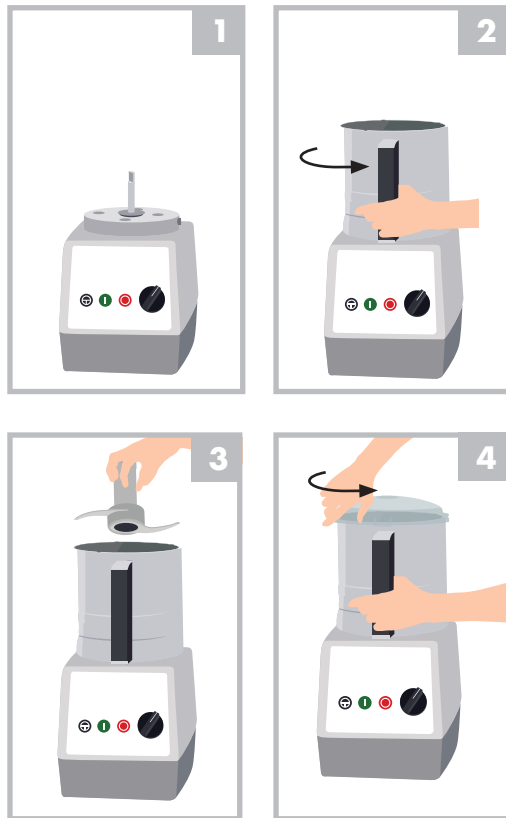


robot coupe®  
 www.robot-coupe.com

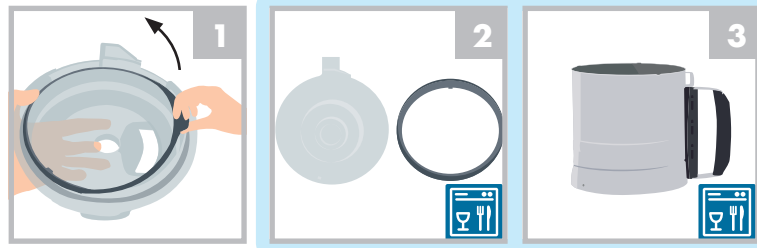
## Tableau de commande / Control Panel Bedieningspaneel / Bedienfeld



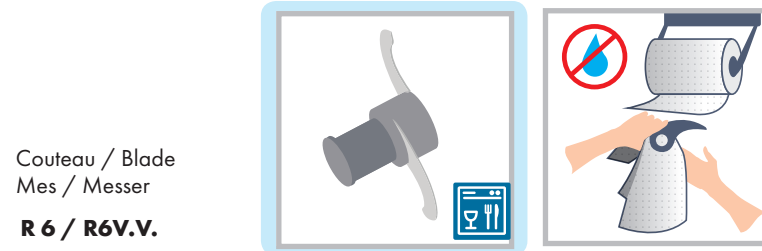
## Mise en marche et utilisation / Switching on and using Inwerkingstelling en gebruik / Inbetriebnahme und Bedienung



## Nettoyage & entretien / Cleaning & maintenance Reiniging & onderhoud / Reinigung & Wartung

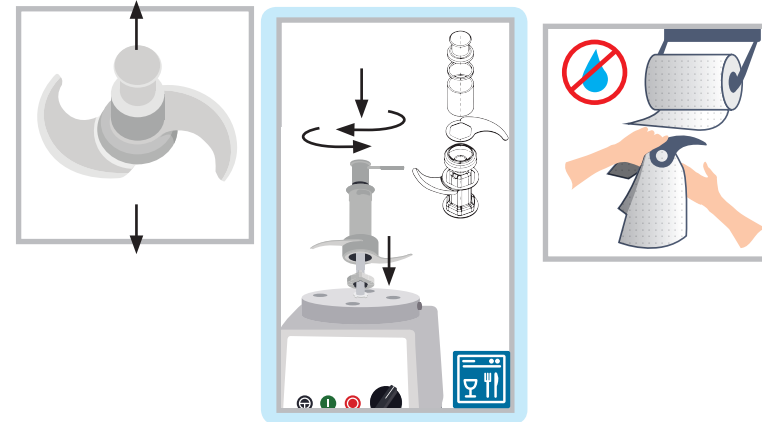


Couvercle / Lid / Deksel / Deckel

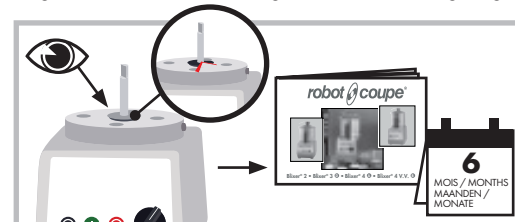


Couteau / Blade  
 Mes / Messer

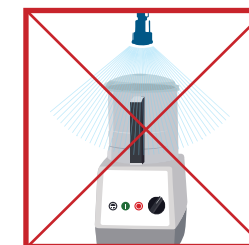
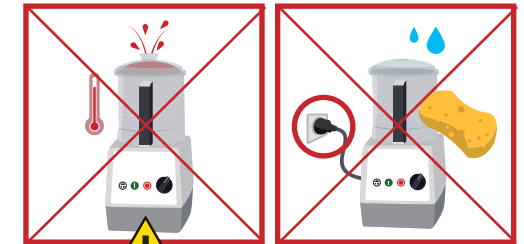
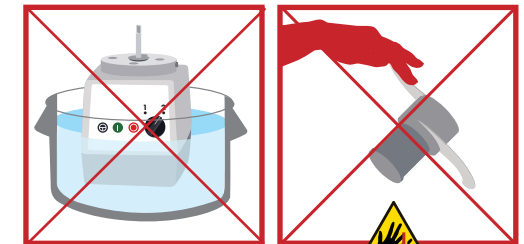
R 6 / R6V.V.



Bague d'étanchéité / O-ring (seal) / Afdichtingsring / Dichtungsring



## Avertissements et sécurité Safety and Warnings Waarschuwingen en veiligheid Warn- und Sicherheitshinweise

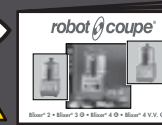


Ne jamais essayer de supprimer les systèmes de verrouillage et de sécurité.  
 Never try to remove the locking and safety systems.  
 Probeer nooit de vergrendelings- en beveiligingsystemen buiten werking te stellen.  
 Niemals versuchen, die Verriegelungs- oder Sicherheitsvorrichtungen zu umgehen.

# R 2 / 3 / 4 / 4 V.V. / 5 / 5V.V. / 6 / 6V.V.

Consignas de seguridad y empleo / Instruções de segurança e de utilização  
Istruzioni di sicurezza e di utilizzo / Рекомендации по технике безопасности и использованию

Debe fijarse a la pared.  
Para fixar na parede  
Da fissare a parete  
Повесить на стену



robot coupe®

www.robot-coupe.com

## Panel de mandos / Pannel de controlo / Quadro comandi / Панель управления



Botón Parada  
Botão Desligar  
Pulsante arresto  
Кнопка « Стоп »



Botón Marcha  
Botão Ligar  
Pulsante accensione  
Кнопка « Пуск »



Botón Pulse  
Botão Pulse  
Pulsante impuls  
Кнопка « Пульс »

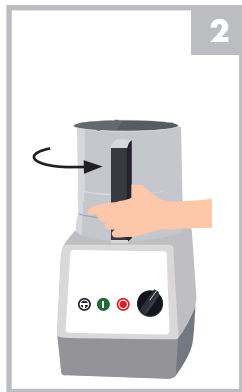


R 4 / R 5 / R 6  
Selector de velocidad  
Seletor de velocidade  
Settore di velocità  
Переключатель скорости

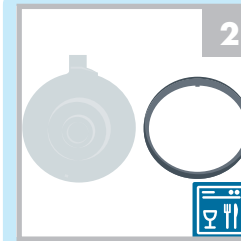
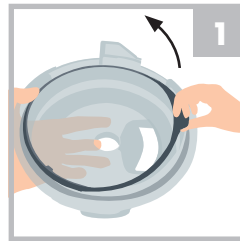


R 4 V.V. / R 5 V.V. / R 6 V.V.  
Variador de velocidades  
Variador de velocidade  
Variatore di velocità  
Регулятор скорости

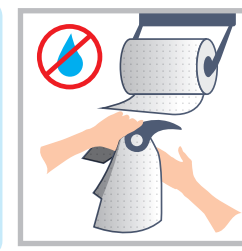
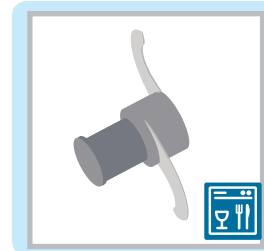
## Puesta en marcha y utilización / Ligaçao e utilização / Accensione e utilizzo / Включение и использование



## Limpieza y mantenimiento / Limpeza e manutenção / Pulizia e manutenzione / Чистка и уход

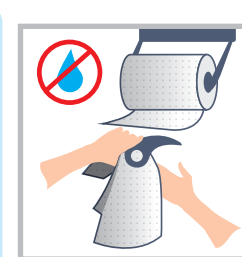
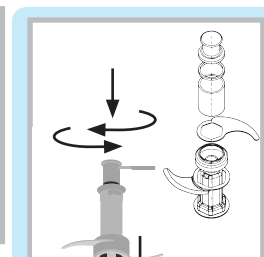
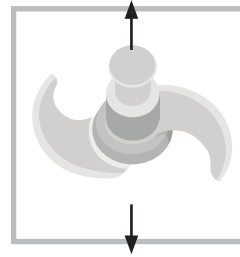


Tapa / Tampa / Copercchio / Крышка

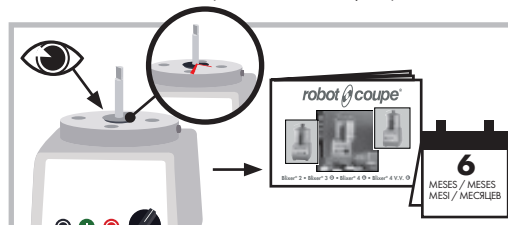


Cuchilla / Lâmina / Coltello / Нож

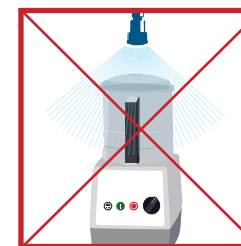
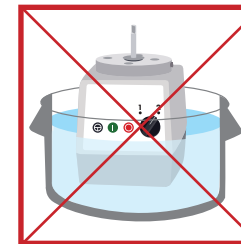
R 6 / R6V.V.



Anillo de hermeticidad / Anel de vedação / Anello di tenuta / Уплотнительное кольцо



## Advertencia y seguridad / Advertência e segurança / Avvertenze e sicurezza / Предупреждения по безопасному использованию



Nunca tratar de suprimir los sistemas de bloqueo y de seguridad.  
Nunca tentar suprimir os sistemas de bloqueio e de segurança.  
Non cercare in alcun caso di eliminare i sistemi di blocco e di sicurezza.  
Никогда не отключать системы блокировки и защиты.