



KUR9-1



KUR12-2



KUR15-2



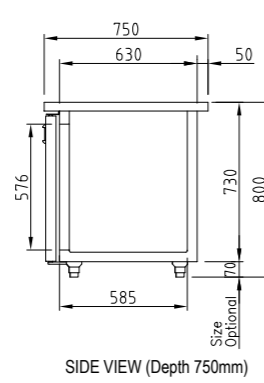
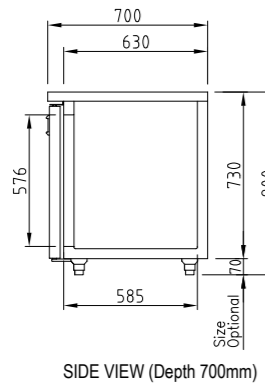
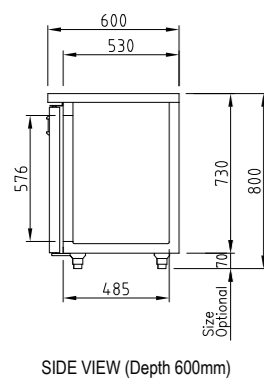
KUF9-1



KUF12-2



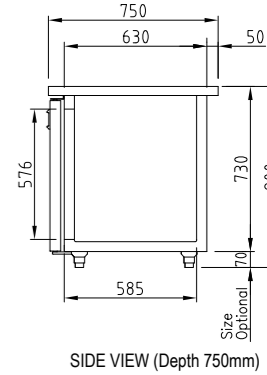
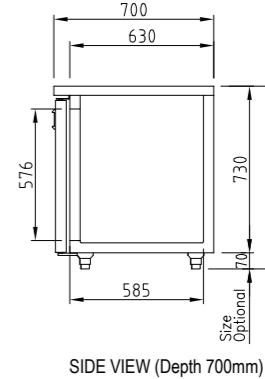
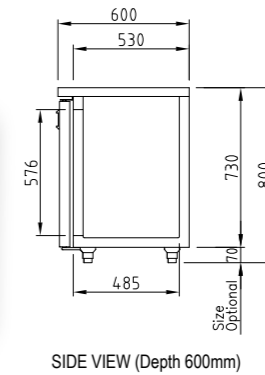
KUF15-2



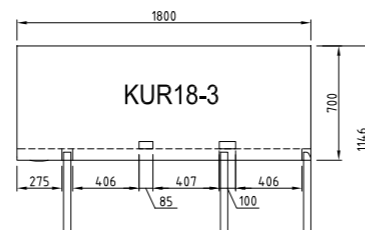
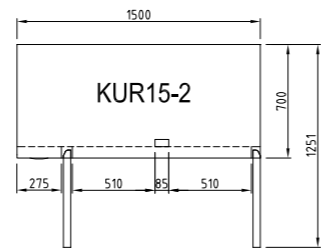
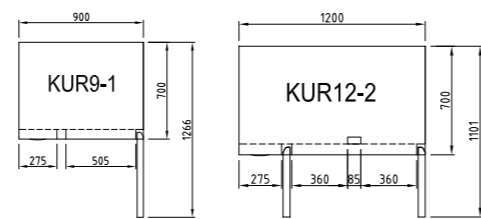
KUR18-3



KUF18-3



型号 / Model	KUR9-1	KUR12-2	KUR15-2	KUR18-3
分类 / Classification	冷藏柜 (Refrigerator)			
外形尺寸 Cabinet imensions(W*D*H,mm)	900X750X800 900X700X800 900X600X800	1200X750X800 1200X700X800 1200X600X800	1500X750X800 1500X700X800 1500X600X800	1800X750X800 1800X700X800 1800X600X800
容量 / Capacity(Liters)	198	311	425	538
柜内温度 / Inner Temperature	1°C~8°C			
门数 / Doors	1	2	2	3
搁物架数量 / # of shelves	1	2	2	3
制冷剂 / Refrigerant	R-134a	R-134a	R-134a	R-134a
压缩机 / Compressor (Hp)	1/4	1/4	1/4	1/3
制冷方式 / Cooling Type	风冷式 (Fan cooling type)			
隔热方式 / Insulation Type	整体高密度发泡 (Polyurethane) / Cyclopentane(环戊烷) + CFC Free(不含氟氯烃)			
温度设定方式 Temperature control type	数字控温 (Digital)			
电流 / Amps(A)	2.5	3	3	4.4
电源 / Voltage (V/Hz/Ph)	220/50/1			
功率 / Power (W)	314	314	314	366
重量 / Weight (Kg)	72	84	93	109



型号 / Model	KUF9-1	KUF12-2	KUF15-2	KUF18-3
分类 / Classification	冷冻柜 (Freezer)			
外形尺寸 Cabinet imensions(W*D*H,mm)	900X750X800 900X700X800 900X600X800	1200X750X800 1200X700X800 1200X600X800	1500X750X800 1500X700X800 1500X600X800	1800X750X800 1800X700X800 1800X600X800
容量 / Capacity(Liters)	198	311	425	538
柜内温度 / Inner Temperature	-21°C~-12°C			
门数 / Doors	1	2	2	3
搁物架数量 / # of shelves	1	2	2	3
制冷剂 / Refrigerant	R-134a	R-134a	R-134a	R-404a
压缩机 / Compressor (Hp)	1/3	1/3	1/3	3/4
制冷方式 / Cooling Type	风冷式 (Fan cooling type)			
隔热方式 / Insulation Type	整体高密度发泡 (Polyurethane) / Cyclopentane(环戊烷) + CFC Free(不含氟氯烃)			
温度设定方式 Temperature control type	数字控温 (Digital)			
电流 / Amps(A)	2.5	3	3	3
电源 / Voltage (V/Hz/Ph)	220/50/1			
功率 / Power (W)	366	366	366	613
重量 / Weight (Kg)	72	84	93	109

